

Model Stuttgart Vaihingen



Security level: Class S1 according to EN 14450
Security level: A according to VDMA 24992 - Conditions May'95
Fire rating: Fire-protected safes according to EN 15659 LFS 30 P

Suitable for the storage of:

- office documents, office equipment
- gun (see additional accessories)
- keys (see additional accessories)

Safes standardly prepared for assembly of electronic or mechanical combination locks, indicated by the manufacturer.

Description

Series Stuttgart Vaihingen - document safes.

Body: double-walled body (63 mm thick)
Door: multi-walled door construction (78 mm thick)
Locking: 4-way locking bolt system - incl. fix bolts on the hinge side

Standard option

Lock: high security key lock I class VdS with two keys (95 mm)
Boltwork handle: handle, protruding 60 mm and key lock rosette, protruding 12 mm
Hinges: external
Door opening angle: 180°
Mounting holes: 2 holes in the floor
Colour: RAL 7035 (light grey)



Model Stuttgart Vaihingen

Art. No.	Model	Outer dimensions*			Inner dimensions			Door light		Anchoring		Weight Kg	Shelves Number	Files Number	Volume Liters
		Height mm	Width mm	Depth mm	Height mm	Width mm	Depth mm	Height mm	Width mm	Bottom number	Backwall number				
38100	Stuttgart Vaihingen	370	490	455	229	355	293	229	324	2	-	41	1	3	24
38101	Stuttgart Vaihingen	470	380	455	329	245	293	329	214	2	-	40	1	3	24
38102	Stuttgart Vaihingen	470	490	455	329	355	293	329	324	2	-	48	1	4	34
38103	Stuttgart Vaihingen	670	490	455	529	355	293	529	324	2	-	63	1	6	55
38104	Stuttgart Vaihingen	820	490	455	679	355	293	679	324	2	-	72	1	8	71
38105	Stuttgart Vaihingen	1170	700	510	1029	565	348	1029	534	2	-	129	2	21	202
38106	Stuttgart Vaihingen	1520	700	510	1379	565	348	1379	534	2	-	157	3	28	271
38107	Stuttgart Vaihingen	1870	700	510	1729	565	348	1729	534	2	-	188	4	35	340
38108	Stuttgart Vaihingen**	1170	950	510	1029	815	348	1029	784	2	-	156	2	30	292
38109	Stuttgart Vaihingen**	1870	950	510	1729	815	348	1729	784	2	-	220	4	50	490
38110	Stuttgart Vaihingen**	1870	1300	510	1729	1165	348	1729	1134	2	-	293	4	75	701

* excluding hinges, handles and fittings ** 2-door



Body: double-walled body (63 mm thick)



Door: multi-walled door construction (78 mm thick)

Closure options

Standard option: Key lock

Options available against surcharge:

- Mechanical code lock
- Electronic lock
- Electronic lock with mechanical emergency (Excl. 38101)

Accessories available against surcharge

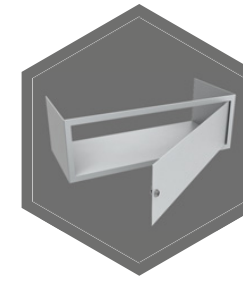
QR code:

- Inner safe
- Inner safe with partition wall, 2 - door
- Extensible file frame
- Extendable shelf
- Extendable drawer for individual arrangement
- Shelf for hanging files

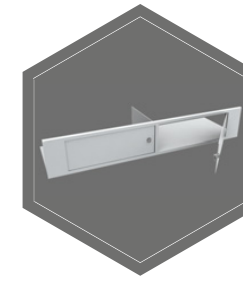
- RAL 7035
- RAL 9006
- RAL 7024

All information concerning weight, color and dimensions are noncommittal and subject to errors and changes. Minor deviations are conditional on the production process. Technical changes, modifications and printing errors reserved. Safes may be top-heavy, during commissioning, please exercise appropriate caution in accordance with the installation guide. Pictograms are not technical description of the product.

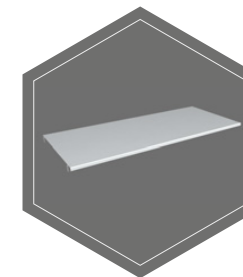
The picture shows an example of a safe for documents - model Hagen 39318 with additional equipment.



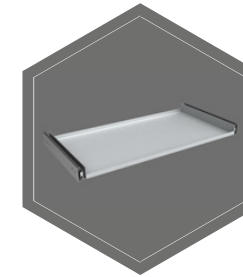
Inner safe



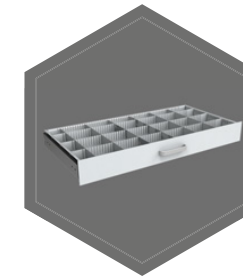
Inner safe with partition wall, 2 - door



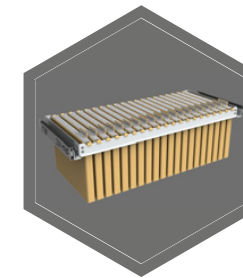
Shelf



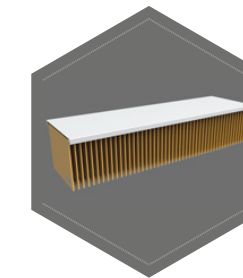
Extendable shelf



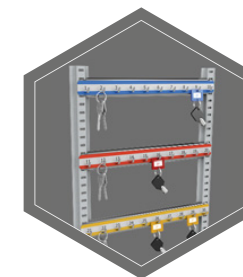
Extendable drawer for individual arrangement



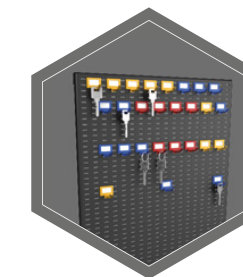
Extensible file frame



Shelf for hanging files



Hook bars



System of hooks on the inner side of the doors